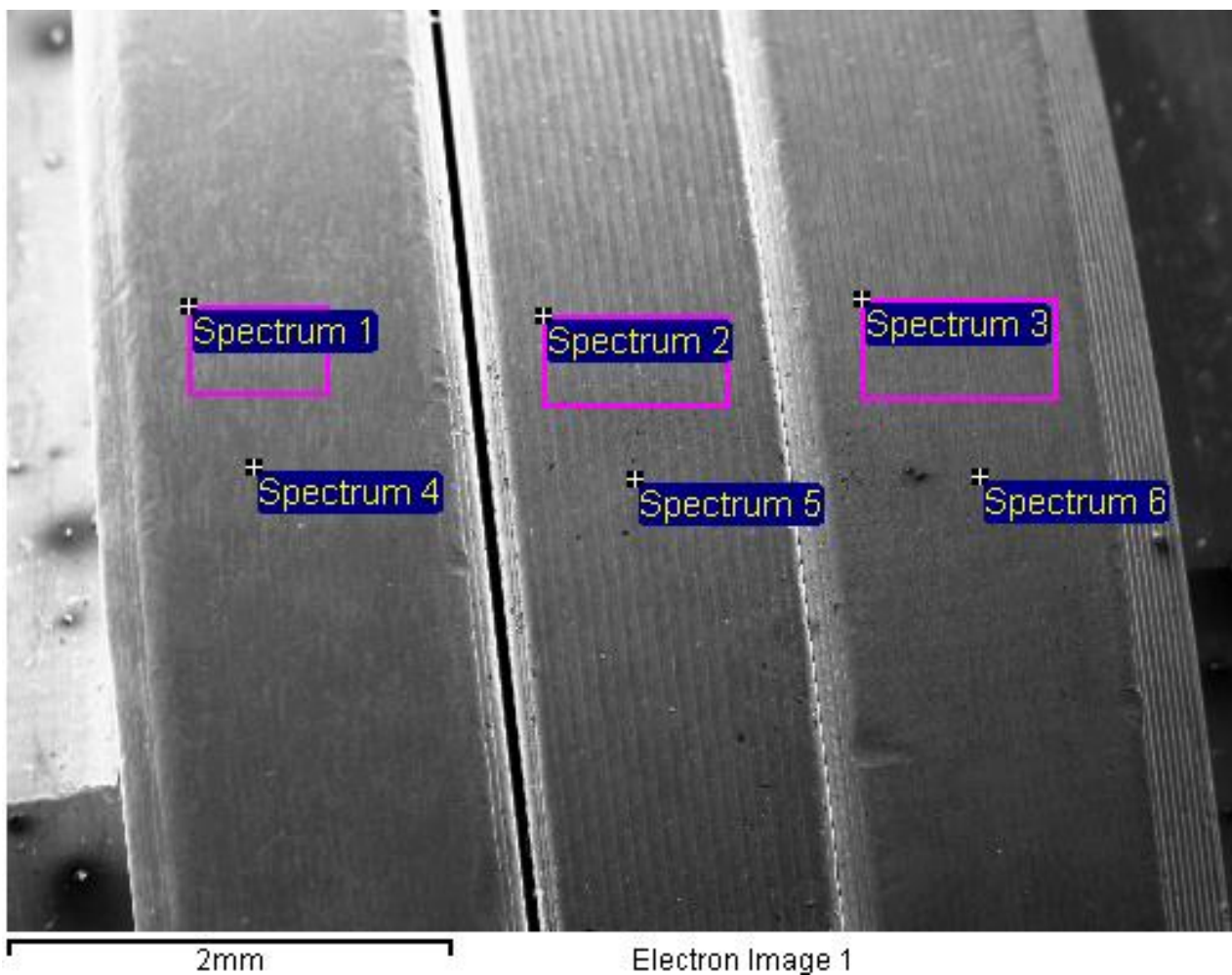


Bolt washer nut – sample 1



Processing option : All elements analysed (Normalised)

| Spectrum | In stats. | Al | Ti | V | Total |
|------------|-----------|------|-------|------|--------|
| Spectrum 1 | Yes | 6.57 | 89.10 | 4.33 | 100.00 |
| Spectrum 2 | Yes | 6.21 | 89.61 | 4.18 | 100.00 |
| Spectrum 3 | Yes | 6.19 | 89.50 | 4.31 | 100.00 |
| Spectrum 4 | Yes | 6.34 | 89.45 | 4.21 | 100.00 |
| Spectrum 5 | Yes | 6.15 | 89.67 | 4.18 | 100.00 |
| Spectrum 6 | Yes | 5.70 | 89.89 | 4.40 | 100.00 |
| Max. | | 6.57 | 89.89 | 4.40 | |
| Min. | | 5.70 | 89.10 | 4.18 | |

